

Key Management Facility II



Advantages

- ▶ Open Architecture – Manage the encryption keys of any P25 OTAR-compliant mobile or portable radio
- ▶ Administration – Query the radios to find out what keys are currently loaded, which helps in troubleshooting
- ▶ Security – Communicate between the KMF II server and client over a secure TCP/IP session
- ▶ Flexibility – Support for up to 100 clients & database support for up to 80,000 subscribers
- ▶ Organization – Manage secure radio communications among talkgroups, enable operators to visually track members and encryption keys assigned to each group
- ▶ Simplicity – Set up KMF II in minutes with minimal training
- ▶ Convenience – Import/Export subscriber data from & to external databases

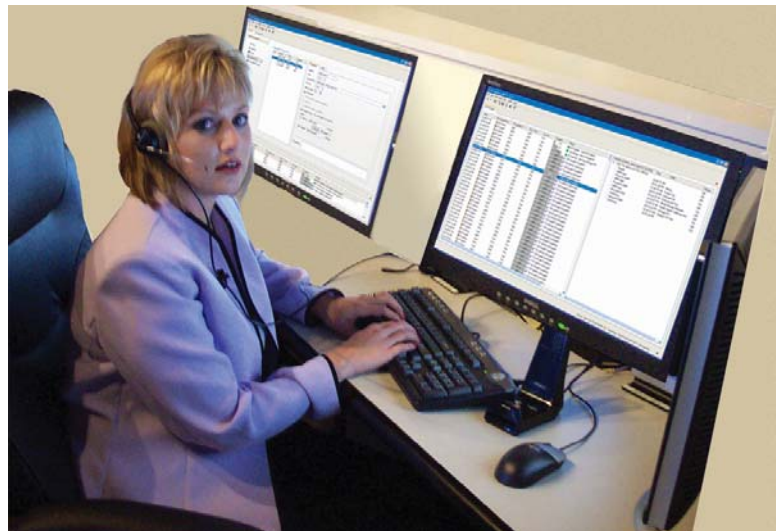
EF Johnson's Conventional IP25™ Infrastructure Systems combine the global reach of the VoIP infrastructure standard with the Project 25 Common Air Interface (CAI).

Maintaining security and control over the radios on your network is a vital function. Control every P25 radio on your network with EF Johnson's Key Management Facility II (KMF II). KMF II is a secure, fast P25-compliant client-server solution that simplifies secure key management and distribution.

Using Sophisticated Encryption Keys...

KMF II provides you with a reliable, flexible, and portable means to securely manage your communications. Centralizing your key management eliminates the need to manually rekey your radios. The rekeying feature in the KMF II, known as Over-the-Air-Rekeying (OTAR), encrypts and sends the keys and related key management messages to prevent them from being compromised. For added security, KMF II enables you to send new keys to any radio on your system. You can create talkgroups to ensure that messages are communicated to the right people at the right time. If a radio is lost or falls into the wrong hands, KMF II gives you the ability to disable and zeroize it.

IP25
EFJohnson



Key Management Facility II

Conventional IP25™
Infrastructure Systems

Essential KMF II Features:

- ▶ Create and delete keys
- ▶ Manage field radios
- ▶ Manage radios as subscriber groups
- ▶ Share Keys between KMFs (Both EFJ and Motorola KMF equipment)*
- ▶ Segregated KMFs for true user partitioning
- ▶ Eliminate the need to manually rekey traffic keys in radios and consoles.
- ▶ Update subscribers with latest encryption-related material
- ▶ Remove all keys from a subscriber, should it become lost or compromised
- ▶ Display a searchable log of all OTAR-related system activity
- ▶ Allows for frequent rekeying

Key KMF II Functions:

- ▶ Creating and deleting keys
- ▶ Managing subscribers
- ▶ Managing subscriber groups
- ▶ Determining whether subscriber can be successfully addressed
- ▶ Updating subscribers with latest encryption-related material
- ▶ Removing all keys from a subscriber, should it become lost or compromised
- ▶ Display a searchable log of all OTAR-related system activity

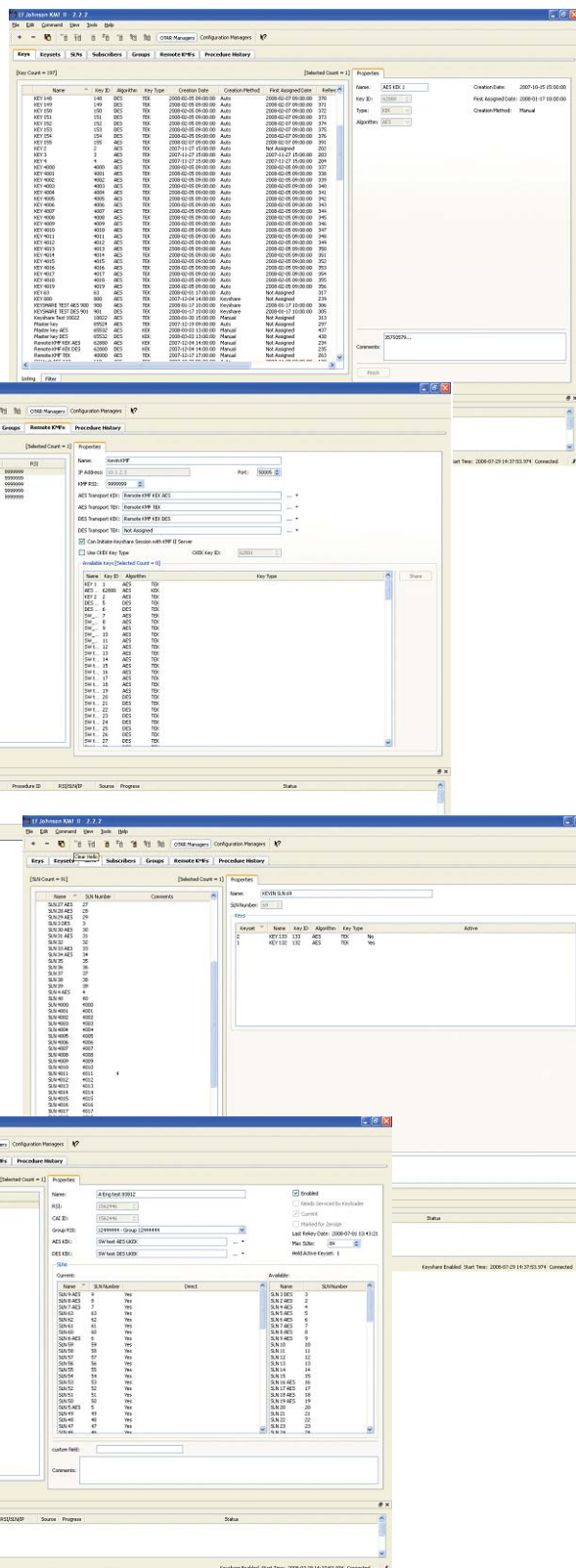
System Components

- Application software
- Windows XP-based client workstation
- Linux-based hardware server
- Johnson Encryption Machine (JEM)

For more information, visit
www.EFJohnson.com
800-328-3911

Project 25

Telecommunications Industry Association's (TIA) standard for digital 2-way radio technology. Project 25 was originally created by the Association of Public-Safety Communications Officials, International (APCO) in cooperation with the National Association of State Telecommunications Directors (NAS-TD) and the U.S. government to ensure interoperability between Federal, state, and local public safety agencies. EFJohnson was one of the first developers of wireless communications products to be fully compliant with Project 25 interoperability standards.



Form S548 5/08. Supersedes 12/06. Printed in U.S.A. Specifications subject to change without notice.

© Copyright 2008 EFJohnson. IP25 is a trademark of EFJohnson. Windows is a registered trademark of Microsoft Corporation. Pentium is a registered trademark of Intel Corporation. All other trademarks are the property of their respective owners.



1440 Corporate Drive, Irving, TX 75038-2401
Phone: 972-819-0700, 1-800-328-3911 Fax: 972-819-2307
www.EFJohnson.com